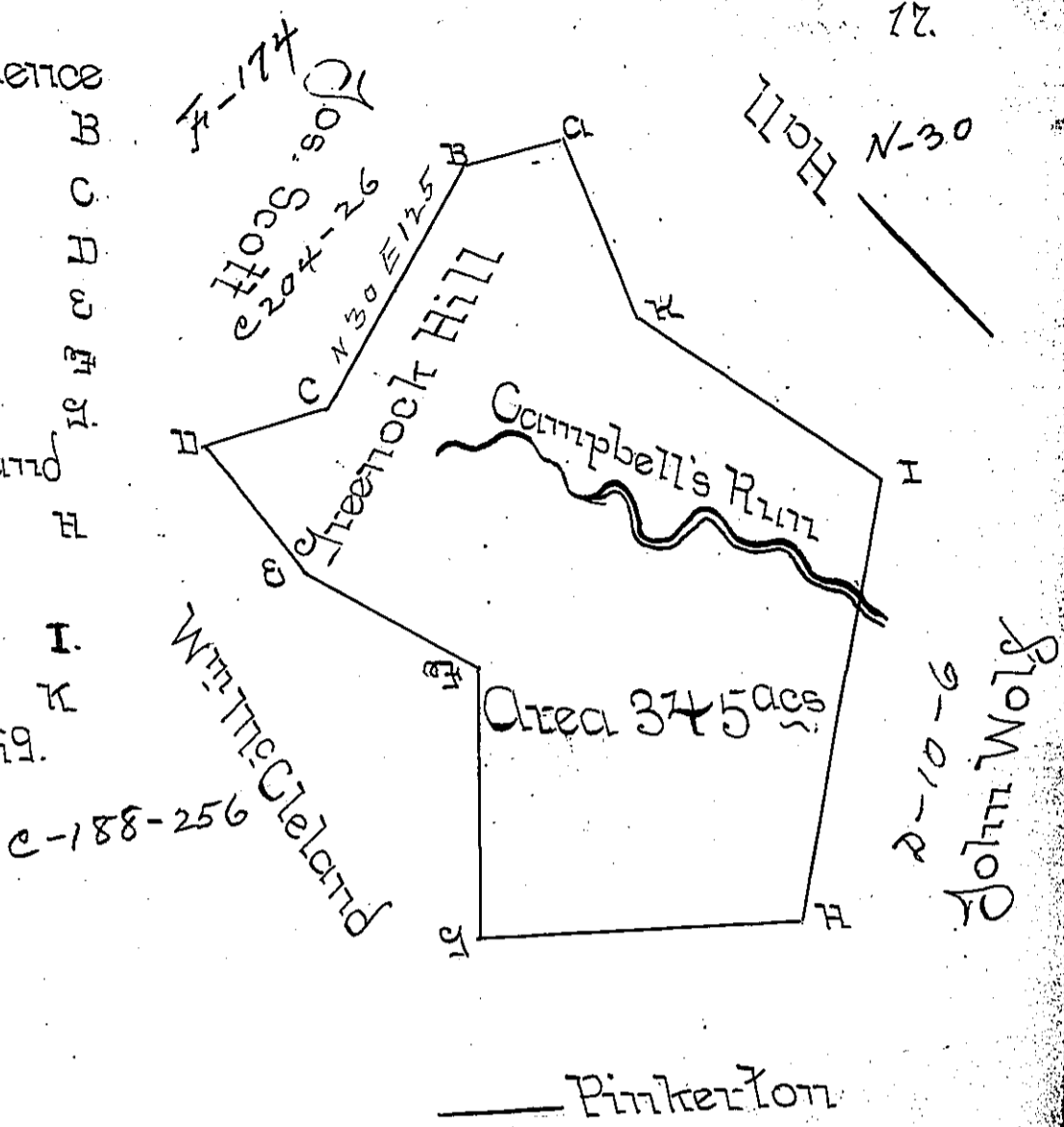


- Beginning at a Black Oak
- Corner to — Hall at A. Hence
- S^o 73^o W. 43.75 To a W.O.K. B
- S^o 30^o W 12.5 To a W.O.K. C
- S^o 71. W. 59 1/2 To a W.O.K. D
- S^o 41.8 To To a W.O.K. E
- S^o 61. E. 88 To a W.O.K. F
- S^o 1. E. 122 To a W.O.K. G
- N^o 87 E. 144 To a Stake and small White Oak. H
- N^o 10. E. 198 To a Stake W.O.K. and Hickory I.
- N^o 56 W. 132 To a W.O.K. K
- N^o 23 W. 87 To 4^o Begining.



In pursuance of a Warrant dated at Philadelphia the 2^d day of May 1785. the above is a Draught of a Tract of Land called Greenock Hill situate on Campbells Run in Washington County, containing Three hundred & forty five Acres with the usual Allowance of Six Per Cent for Roads, Highways &c. Surveyed for James Bingley Aug^r 1st 1785.

To John Lukens Esq^r

Presley Nevill }
Matt^r Ritchie } DEPT

IN TESTIMONY that the above is a copy of the original remaining on file in the Department of Internal Affairs of Pennsylvania, made conformably to an Act of Assembly approved the 16th day of February, 1833, I have hereunto set my Hand and caused the Seal of said Department to be affixed at Harrisburg, this Third day of May 1898

James W. Latta
Secretary of Internal Affairs.